

# Creating DDI Compliant Codebooks

William C. Block

Wendy L. (Treadwell) Thomas

Robert P. Wozniak

Joshua J. Buysse

IASSIST 2001

Amsterdam, The Netherlands

May 16, 2001

# **MADDIE**

**Minnesota Authoring-tool for Data  
Documentation Initiative Encoding**

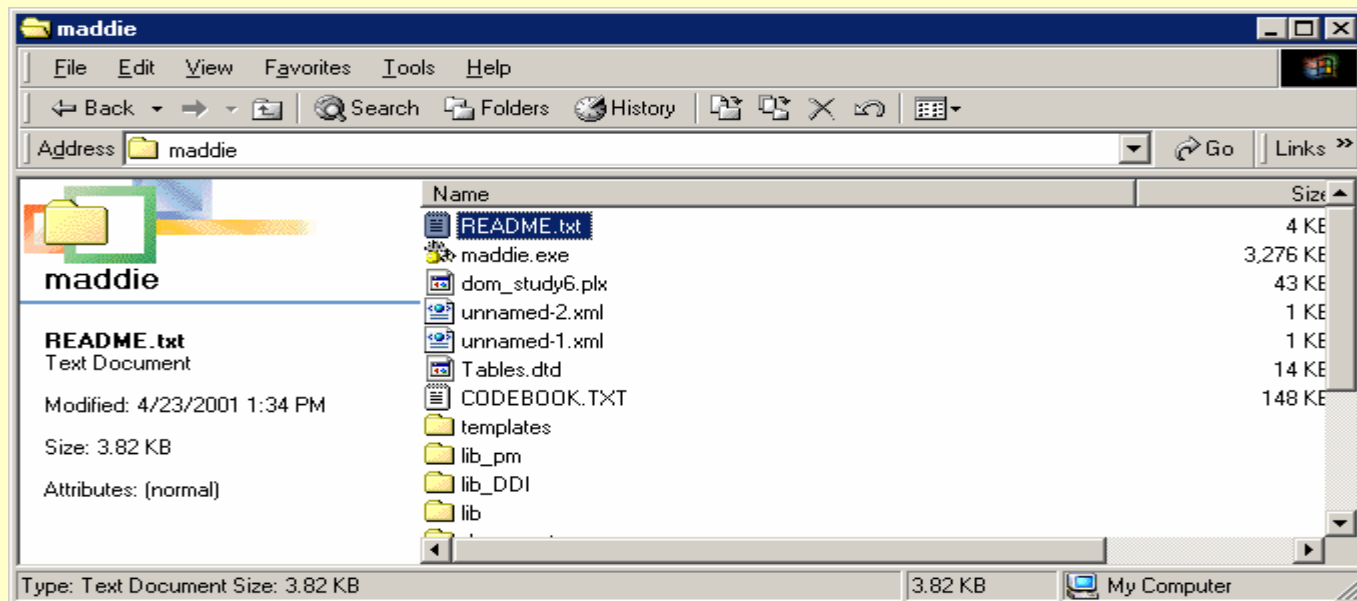
# MADDIE

Minnesota Authoring-tool for Data  
Documentation Initiative Encoding



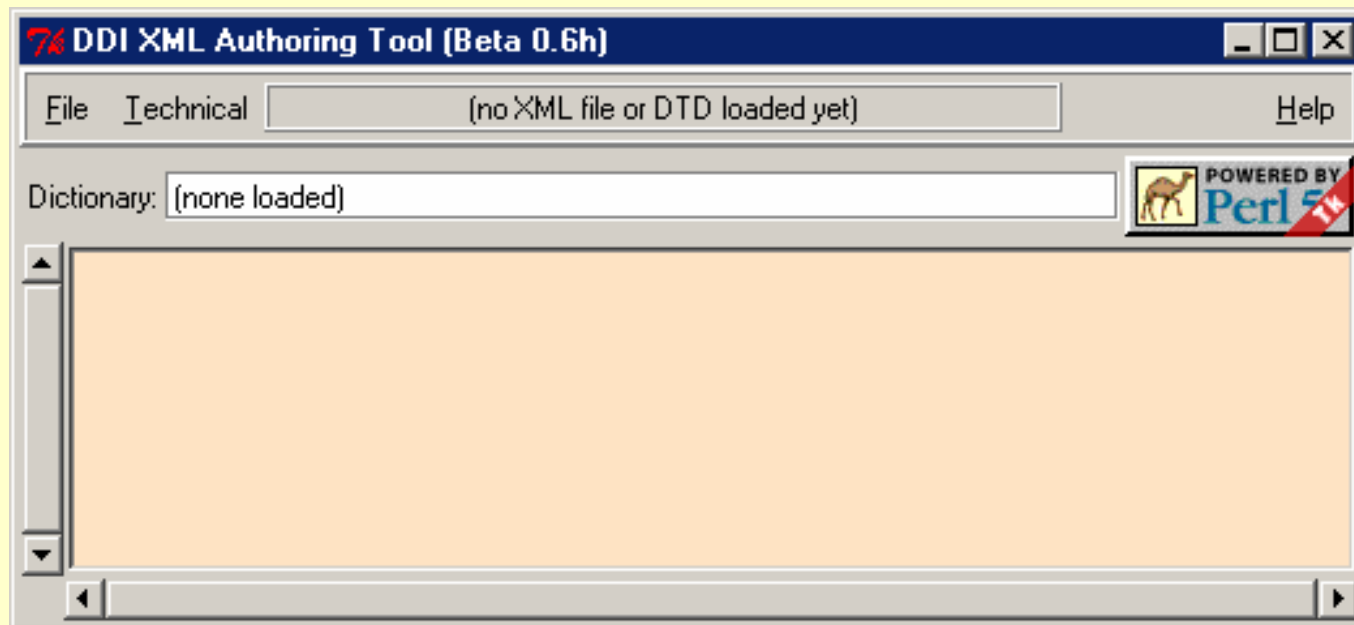
# To start MADDIE

- Open up the Maddie directory: C:\Maddie
- Click on Maddie.exe to open the DDI XML Authoring Tool

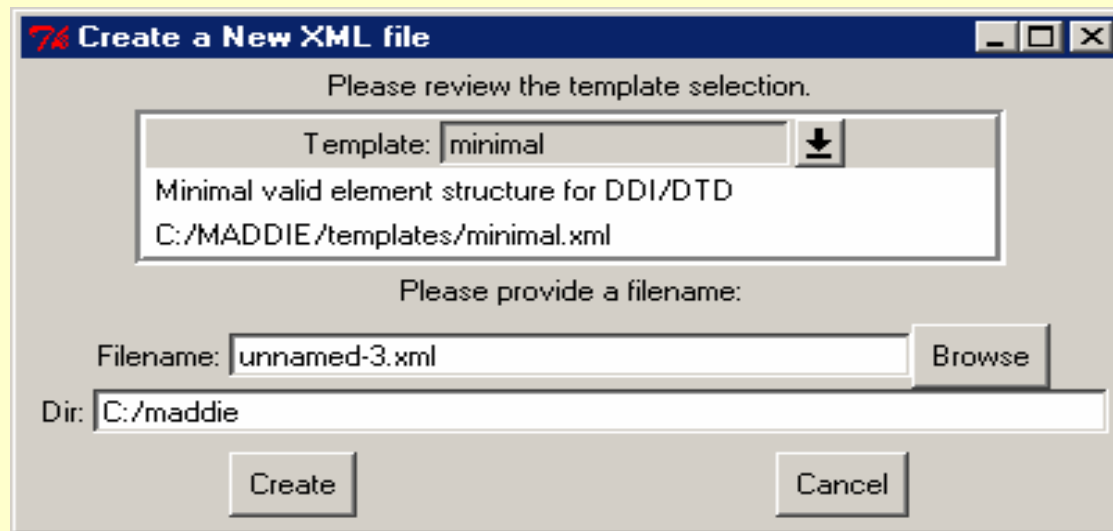


# To open an editing session

- Click “File...New” to start a new file.
- Click “File...Open” to open an existing \*.xml file

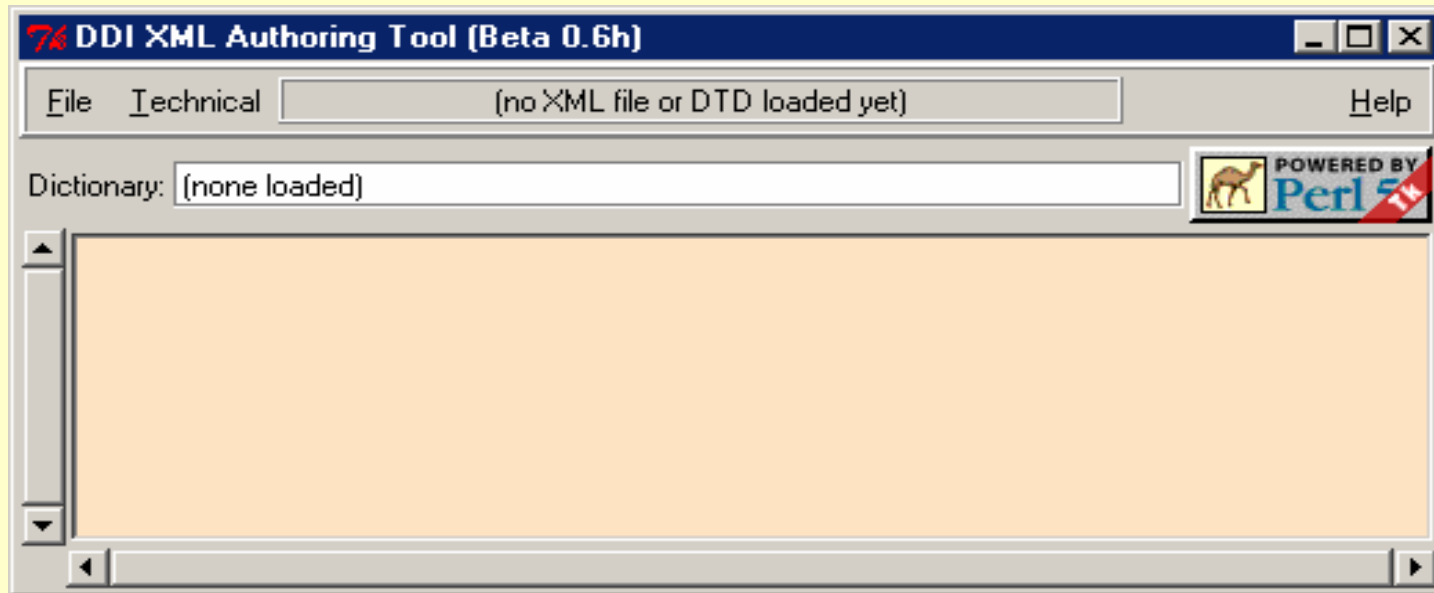


# Clicking “File...New” produces:



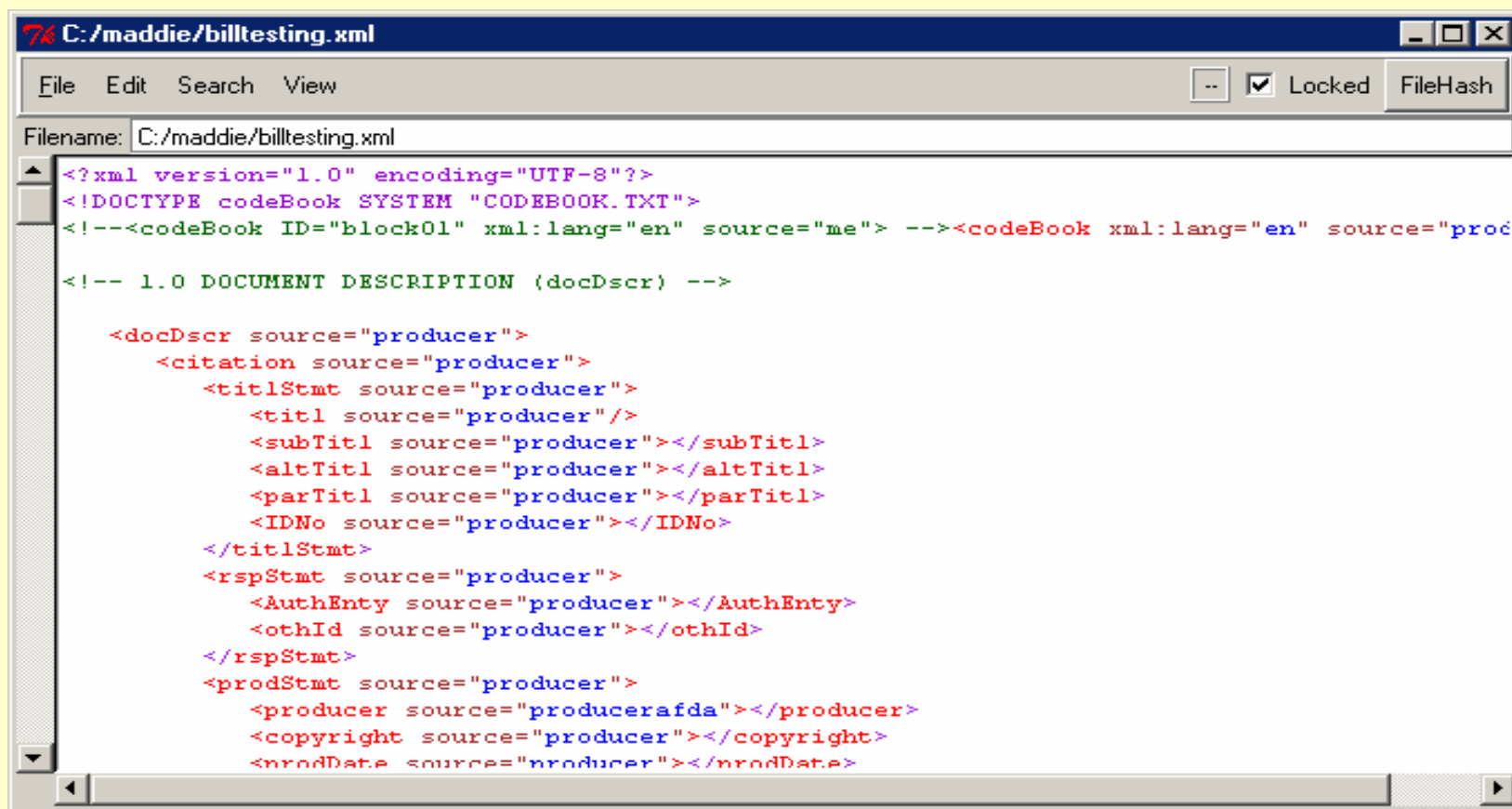
The “Template” pull down menu gives you a choice of DDI compliant XML structures to choose from, ranging from minimal to full DDI structures. The three choices beginning with “icpsr-...” are not working in the beta software.

# The Technical menu option



The “Technical” option on the main menu currently offers technical detail useful for those debugging the MADDIE software or for those who want to see more detail about what is driving MADDIE. It isn’t generally useful to those marking up a codebook.

# A new codebook using the “skeleton” template:



The image shows a screenshot of a text editor window titled "C:/maddie/billtesting.xml". The window has a menu bar with "File", "Edit", "Search", and "View". On the right side of the menu bar, there are buttons for "--", "Locked" (with a checked checkbox), and "FileHash". The "Filename:" field shows "C:/maddie/billtesting.xml". The main text area contains the following XML code:

```
<?xml version="1.0" encoding="UTF-8"?>
<!DOCTYPE codeBook SYSTEM "CODEBOOK.TXT">
<!--<codeBook ID="block01" xml:lang="en" source="me"> --><codeBook xml:lang="en" source="prod

<!-- 1.0 DOCUMENT DESCRIPTION (docDscr) -->

    <docDscr source="producer">
        <citation source="producer">
            <titlStmt source="producer">
                <titl source="producer"/>
                <subTitl source="producer"></subTitl>
                <altTitl source="producer"></altTitl>
                <parTitl source="producer"></parTitl>
                <IDNo source="producer"></IDNo>
            </titlStmt>
            <rspStmt source="producer">
                <AuthEnty source="producer"></AuthEnty>
                <othId source="producer"></othId>
            </rspStmt>
            <prodStmt source="producer">
                <producer source="producerafda"></producer>
                <copyright source="producer"></copyright>
                <nrodDate source="nroducer"></nrodDate>
```

# Adding an Element



Doing so brings up the Element Addition Dialog. Here you edit/add attributes and #PCDATA text. Notice also that the type and default values for an elements attributes are also itemized.

	NAME	VALUE	TYPE	DEFAULT
ID:			ID	#IMPLIED
xml:lang:			NMTOKEN	#IMPLIED
source:		producer	(archive producer)	"producer"
abbr:			CDATA	#IMPLIED
affiliation:			CDATA	#IMPLIED
role:			CDATA	#IMPLIED

PCDATA (element text):

Commit Addition View Documentation Cancel Addition

# Deleting an Element



# Editing an Element

Double clicking on that same opening tag brings up the Element Edit Dialog. This dialog is almost identical to the Element Addition Dialog

producer

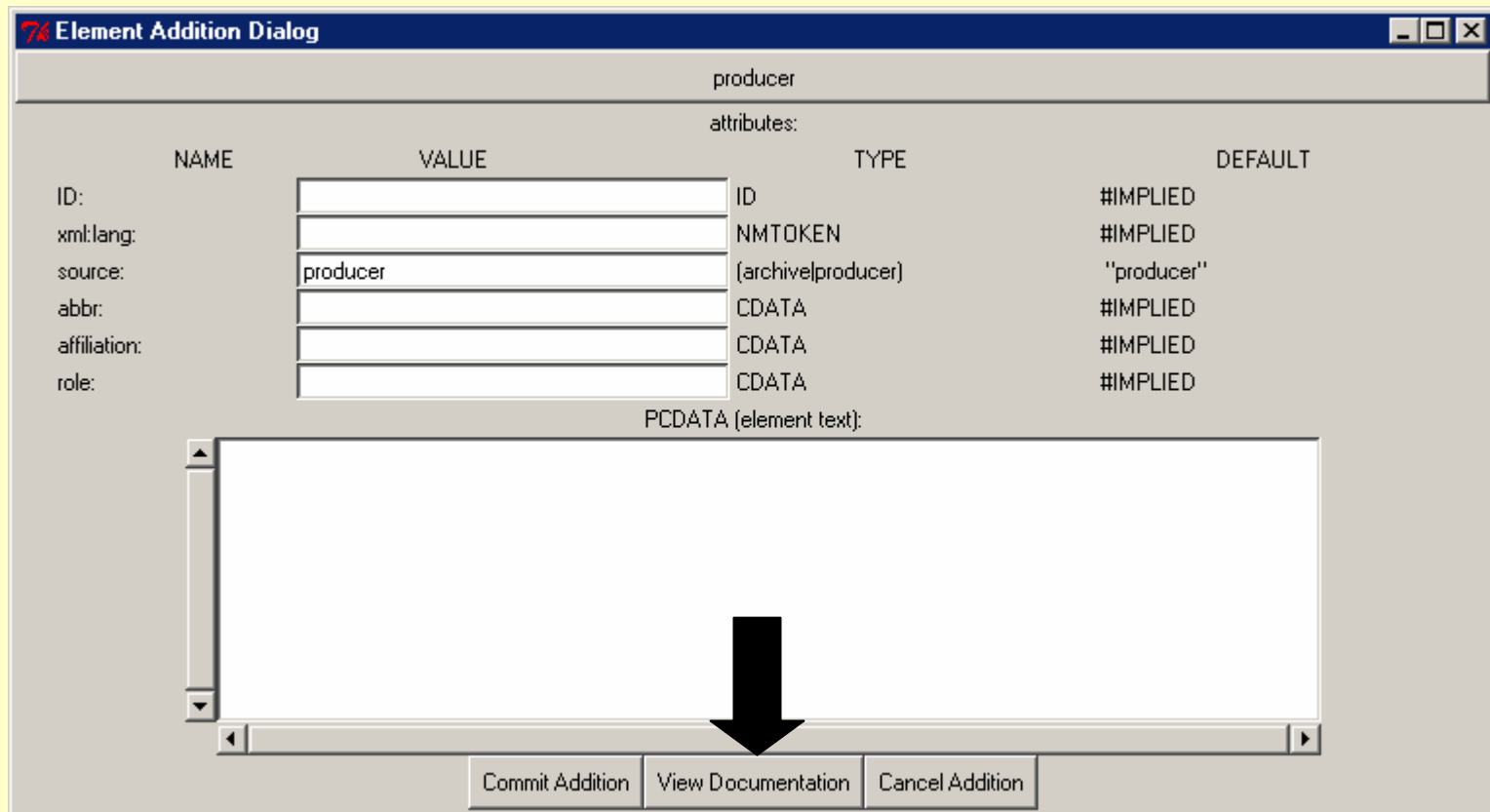
attributes:

NAME	VALUE	TYPE	DEFAULT
ID:	<input type="text"/>	ID	#IMPLIED
xml:lang:	<input type="text"/>	NMTOKEN	#IMPLIED
source:	producer	(archive producer)	"producer"
abbr:	<input type="text"/>	CDATA	#IMPLIED
affiliation:	<input type="text"/>	CDATA	#IMPLIED
role:	<input type="text"/>	CDATA	#IMPLIED

PCDATA (element text):

Commit Addition View Documentation Cancel Addition

At any time during the Edit/Add procedures you may view the documentation for the current element by clicking the “View Documentation” button on either of the dialogs.



You can of course cancel your addition or edit by clicking on the button labeled “Cancel Addition”

The screenshot shows a dialog box titled "Element Addition Dialog" with a blue header bar. The main content area is divided into several sections:

- A header bar containing the text "producer".
- A section labeled "attributes:" containing a table with the following columns: NAME, VALUE, TYPE, and DEFAULT.
- A section labeled "PCDATA (element text):" containing a large, empty text area.
- A footer bar containing three buttons: "Commit Addition", "View Documentation", and "Cancel Addition".

The "attributes:" table is as follows:

NAME	VALUE	TYPE	DEFAULT
ID:	<input type="text"/>	ID	#IMPLIED
xml:lang:	<input type="text"/>	NMTOKEN	#IMPLIED
source:	producer	(archive producer)	"producer"
abbr:	<input type="text"/>	CDATA	#IMPLIED
affiliation:	<input type="text"/>	CDATA	#IMPLIED
role:	<input type="text"/>	CDATA	#IMPLIED

A large black arrow points to the "Cancel Addition" button in the footer bar.

# The DDI Documentation Window

The DDI Documentation Window allows you to either enter the name (or part thereof) of the element you need information on or scroll through the list of elements yourself. This window can be reached from either the help menu or the Edit and Add element dialogs.

